

ILKESTON Arts CLUB

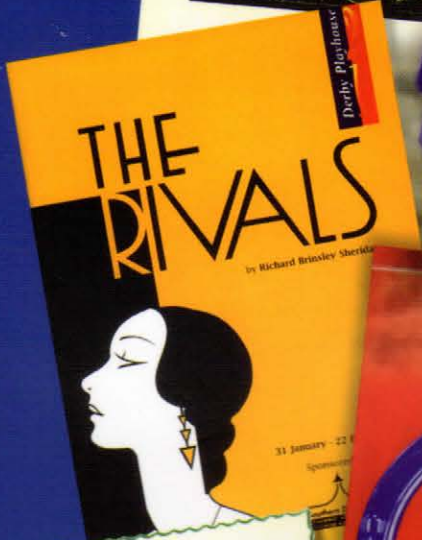


ILKESTON ARTS CLUB
 (Affiliated with The Photographic Alliance through The
 North and East Midlands Photographic Federation)

CLUB ROOM **THE PUBLIC LIBRARY**

President: THE MAYOR Chairman: Mr. R. W. TURNER

General Mr. A. SMITH, B.Sc. - 26, Waterloo Road, Nottingham
 Needlework Mrs. A. SMITH - 62, Lower Stanton Road, Ilkeston
 Photographic Mr. J. SMITH - "Monrose" 29, Factory Lane, Ilkeston
 Hon. Secretary: Mr. J. SMITH - 38, Allendale, Ilkeston
 Treasurer: Mr. J. SMITH - 48, Whitworth Road, Ilkeston



ILKESTON ARTS CLUB

Affiliated to the Royal Photographic Society through the Midland Counties Photographic Federation and Photographic Alliance.

RULES

ILKESTON ARTS CLUB

Presentation Dinner
 Wednesday, 8th October, 1969
 at 7.30 p.m. in
 The Regency Rooms, Ilkeston

Informal Dress 25/-



Celebrating **1000** *Years*



THE CENTENARY
of the
ILKESTON ARTS CLUB

1902 - 2002



ILKESTON ARTS CLUB
AND ILKESTON PHOTOGRAPHIC CLUB
CENTENARY EXHIBITION

At the Erewash Museum, Ilkeston
October - November 2002

ONE HUNDRED YEARS OF ARTS
IN THE COMMUNITY

Written by
JOHN CUNDY

Acknowledgements

The Ilkeston Arts Club Centenary Committee would like to thank the Derbyshire Libraries, Mike Jobling and staff of the Local Studies Section of Ilkeston Library; the Ilkeston Advertiser and the former Ilkeston Pioneer; Matthew Constantine, Curator, Julie Biddlecombe, the former Curator, and the staff of Erewash Museum.

Amongst the many people who have kindly helped in some way in the production of this brochure are:-

Mrs. Barbara Barnett
Mr. David Johnson
Mr. Eric M. Ladbury
Mr. Geoff Preece (Head of Museums & Galleries, Doncaster B.C.)
John Richards of The Workshop Design Co.
Members of W.A.V.E. (Wyvern Amateur Video Enthusiasts)

© Ilkeston Arts Club 2002

The Ilkeston Arts Club is most grateful for the funding received from the LOCAL HERITAGE INITIATIVE that has made this brochure possible.



Designed by The Workshop Design Co. Nottingham
Printed by Colorworks Print Limited, Chesterfield

Introduction

For several years members had been aware of the approach of the Club's Centenary Year and wished to commemorate this achievement with an event to be celebrated and remembered. A decade of close association with Erewash Museum with the staging of Annual Exhibitions led to the offer of a month's reservation for a Centenary Exhibition. Many works of past and present members are held in the Museum's archive, other material is to be found within Ilkeston Library. Further finds for display might be trawled from the general public. 'Plans' were gathering apace. Such an event would demand commitment, considerable research and effort. The Club would benefit from the work of John Cundy, a member who had collected memorabilia and records over time. A lasting memento of the Arts Club Centenary would be the publication of a Commemorative Brochure. As plans continued to progress, it was realised that substantial funding beyond that accrued by the Club would be needed.

Attention was drawn to the Local Heritage Initiative which offers grants and advice to local communities to care for their local landscape, landmarks and traditions. This was pursued with vigour leading to a successful outcome. Ilkeston Arts Club has, over a century, provided a focus of attention for the local community to enrich its culture and traditions.

The Rules at the Club's inception in 1902 stated that the Club had been founded "for (a) the general advancement of the Arts and Sciences of Painting, Photography, Needlework, Applied Art, Music and Literature" and (b) for "the communication of new and interesting matter connected with the Arts, and the mutual improvement, benefit and recreation of its members."

The aims in 2002 remain much the same although the Constitution has been reworded thus "...to promote a broad interest in the Arts through meetings addressing the fine arts, music, architecture, literature and all aspects of creativity...and to actively encourage participation in photography... and painting."

The following pages illustrate the success of an Arts Club within the former Borough of Ilkeston and its surrounds and now within the Borough of Erewash, an area of the south east corner of Derbyshire, bordering Nottinghamshire. That local people have enriched their lives and those of others through their Club's programmes is self evident. The psychological and physical health of a community is dependent on its engagement within, through social intercourse and exchange of ideas. John Tyrrell's hopes voiced at the Town Hall in 1903 and appearing in the following 'Brief History' on page 6 have perhaps been realised.

PAT CAMPBELL
Gen. Secretary

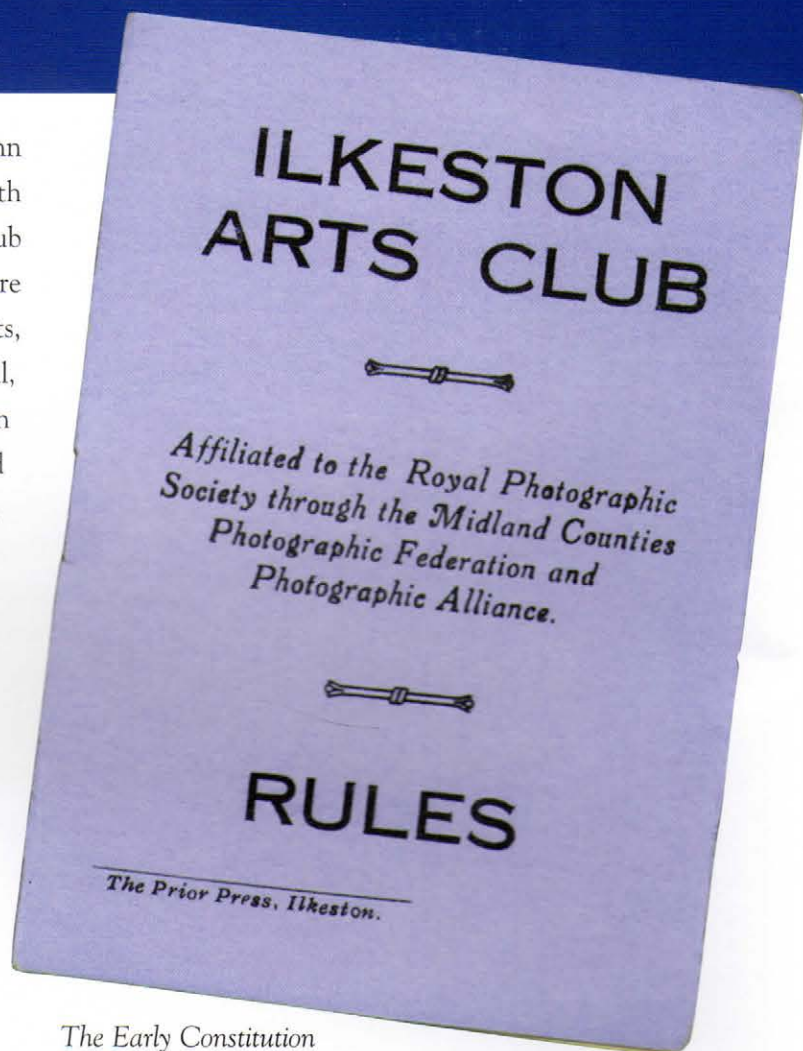
A Brief History

Late in 1902, Alderman Richard Hunt and John Tyrrell, headmaster of Hallam Fields School, met with several other townfolk for the purpose of forming a club for the Arts. There were several meetings and rules were drawn up. A public launch of the new Ilkeston Arts, Camera and Field Club took place at the Town Hall, Ilkeston on 9th January 1903. The Club had been constituted "for the purpose of encouraging and developing the fine arts - painting, sketching, photography, wood carving, music, literature and kindred subjects in Ilkeston and the surrounding district". The first General Secretary of the Club, John Tyrrell, in his speech to the Town Hall audience said that it was possible that the Club would become a centre of enlightenment in the town. He was pleased to announce that the membership already numbered fifty.

It was intended that the Club would meet monthly and that Annual Exhibitions would take place, the first being planned for November 1903. By the time of the exhibition the Club had an impressive list of patrons, which included Sir Walter Foster MP, Wright Lissett (Town Clerk), E.M. Mundy JP and C.R. Crompton (Stanton Ironworks).

The first ordinary meeting of the club occurred in early February 1903 at the Church Institute in the Market Place at which John Tyrrell, an accomplished artist, gave a paper on *Composition*. Lantern slides were used in early lectures and the 'pianoforte' was a feature of musical evenings. The Town Hall was utilised for lectures and whist drives, one of the latter attracting eighty to ninety people in Easter week in 1905. A year earlier the Club was confidently announcing a photographic competition "open to the United Kingdom" for the Annual Exhibition. Silver and bronze medals were awarded and entries were received from Watford, Nelson, Hastings, Tunstall, Plymouth, Sheffield and elsewhere.

After a time the unwieldy title of the club was abbreviated to the Ilkeston Arts Club, without reducing its scope, indeed the 'applied' sections in the Annual



The Early Constitution

Exhibitions

displayed great diversity - wood-carving, woolwork, leatherwork, fabric painting and marquetry, and in 1907 a needlework section was introduced.

Field trips and excursions were undertaken by the photographers, including a visit to Boston in 1907 where members negotiated the ascent of the 'stump' with some discomfort. Work by painting and photographic members was featured in open competitions and exhibitions.

In 1910 a 'Schools Section' was displayed for the first time in the Arts Club Exhibition. This innovation was to become an extremely popular feature for many years and credit is due to the teachers within the Arts Club, of whom there have been a number, for their encouragement and nurturing of the talents of their young charges. Less successful were the short-lived 'Chess Section' and 'Literary Section' of 1914.

After World War I, during which the Club's activities



Members c. 1910

Photo: Ilkeston Library

were suspended, a period of consolidation for the Arts Club began, when both painters and photographers developed and acquired firm reputations both within the Club and beyond. In 1927 several painters of the Club formed *The 20th Century Art Society*, an event which was reported in the hallowed columns of the *London Daily Express* which published an article about the 'modernists' from the 'little town where art flourishes'. This schism in the Arts Club brought on by the 'modernists' was thankfully temporary. The last pre-war Exhibition was in November 1938 and it was in November 1946 that the Club mounted the 31st Exhibition, although a reduced programme was maintained throughout World War II. After the war the 'old guard' of photographers and painters were still in their 'pomp' but were now being challenged by the 'young pretenders', in the case of painters, from the local Art Schools.



Members in late 1920s

The Franklin Studio, 170 Market Street, Nottingham.

Due to local government re-organisation, the Annual Exhibitions could no longer be held in the Town Hall from 1974, however the Rev. Arthur Robertson, Vicar of Ilkeston, kindly offered St. Mary's Church as an alternative venue. 1970 saw the Club move from the basement room of the library in the Market Place, to an outbuilding by the side of the main building.

After several further moves the Club now meets at Shopmobility in High Street and Abbotsford Community Centre. The Club decided to hold its Annual Exhibitions in the Erewash Museum after negotiations with the curator Nigel Overton in 1992.

The membership of the Ilkeston Arts Club was, and is, a cross-section of the local community, where individuals combine to form a unity of purpose - to enjoy and share the Arts with others.

Club Structure and Organisation

From the outset the Mayor of Ilkeston, later the Mayor of Erewash, has served as the Club President.

The Club Rules allow members to be Vice-Presidents subject to proposal and election at an AGM. Patronage came from individuals, businesses and the County Education Committee. When this diminished in the 1990s no further patronage was sought. The Constitution put the management of the Club's affairs in the hands of a Chairman, Vice-chairman, Secretary, Treasurer and at least twelve ordinary members. This numerical flexibility proved cumbersome in 1936 when there were twenty-eight committee members!

The matter was addressed sixty years later with the adoption of a revised Constitution which reduced the ordinary committee members to five. A Ladies Committee was in place by 1906, representing the Needlework Section which was affiliated to the Embroiderers Guild. The Photographic Section was affiliated to the Midland Counties Photographic Federation and latterly to the North and East Midlands Photographic Federation (NEMPF). The appointment of Hon. Lanternists, called Projectionists in later years, was abandoned in 1983.

In 1927 the General Committee approved the formation of a sub-committee for the Photographic Section - one of its functions being to prepare lectures and demonstrations and submit them for inclusion in the Winter Programme. A plea was made by this committee in 1928 to reimburse the Secretary for 'out of pocket' expenses and also for running costs. An example of this committee's financial acumen was the loan of the lantern to the Co-operative Society on condition that "they purchase a 1000 watt lamp and sell it to us in good condition and, in the case of it costing £2.2s.0d. and they ask 25s.0d. for it, the Club should go to that figure".

The Club's organisational structure remained in place in World War II and at the AGM of October 1942 it was reported that although most of the activities were suspended, meetings were held on Fridays during the winter months.

An Extraordinary General Meeting in May 1959 resolved that a Photographic Committee be formed.

This was to be put before the General Committee for official acknowledgement. In retrospect this was an important development in that it set in motion a move towards the formation of Ilkeston Photographic Club in 1976. The Ilkeston Arts Club was to face potential disunity in the later years of the century and it was by dint of a skilful balancing act that the unique structure of the Club was maintained.

It was agreed in 1993 that the Constitution of the Ilkeston Arts Club needed revising to take account of current circumstances. The revised constitution was adopted at an Extraordinary General Meeting of the 2nd August 1996. Reference was made in the New Constitution to the roles of Painting and Photographic Secretaries, and to the function of the Publicity Officer, a position created some thirty years ago. Officers' tenure is limited to three consecutive years. Committee Meetings are held when appropriate and diligently minuted.

September 1996 saw the publication of the first issue of the Arts Club Newsletter under the editorship of Bill Grayson, a role taken over by John King and held currently by Jennie Rigby.



The First Newsletter

PERSONALITY

JOHN LALLY 1914 - 1994

John Francis Lally was an influential and respected figure in the local community. As Headmaster of Gladstone Boys School, 'Pop' Lally was revered by his pupils and ex-pupils. He was born in Whitworth Road, Ilkeston and lived most of his life there. Tall, stately and charismatic, John was a master of oratory. He was Chairman of the Ilkeston Arts Club for fifteen years after serving as Painting Secretary for a lengthy period.

Artistically, he was at the peak of his considerable powers in the decade after World War II, exhibiting as a member of the prestigious Midland Group of Artists (Nottingham) as well as the Arts Club.

His teaching career began in 1934 following a three year course at Sheffield University and retirement came in 1977. Robert Lindsay, the celebrated actor and close friend of John Lally said he was his mentor and was instrumental in furthering his acting career. 'Pop' was unreservedly proud of his ex-pupil.

John Lally was a persistent advocate for an Erewash Museum and was a Founder Member of the Friends of Erewash Museum, Ilkeston Civic Society and Life President of Ilkeston & District Local History Society. In word and deed his love of Ilkeston was clear to all who knew him. The John Lally Gallery at Erewash Museum is a lasting tribute to his memory.



Museum and Grand Hotel, Scarborough
Erewash Museum Collection
by John Lally



Drawing of John Lally
by Karel Thompson

Erewash Museum Collection

Meeting Places of the Club

At the south-east corner of Ilkeston Market Place stands the Ilkeston Institute, a building that was erected in 1884 for a Mutual Improvement Society. The Church Institute, as it was known, let rooms to various local organisations and on the ground floor was a large lecture room where the Ilkeston Arts Club held its first meetings in 1903. The Annual Dinner and Medal Presentation evenings of 1905, 1906 and 1907 were held in the Institute.

The Arts Club began a long association with the Carnegie Library (opened in 1904) with a series of lectures there in 1905. At a Library Committee meeting in July 1906 it was agreed that "the Arts Club be allowed to use the large storeroom and to provide for a supply of gas and water as they may desire".



*The Hayloft, Erewash Museum
Photo: W.A.V.E.*

The Town Hall was also used extensively by the Club for whist drives, lectures, dances, Arts League of Service performances (The Travelling Theatre) and the Annual Exhibitions. The Sir John Warren was the venue for the Annual Dinners of 1909 and 1910, and in 1919 a series of lectures were held in the Congregational Church Schoolroom in Albert Street.

At the AGM of 5th October 1928 the meeting was informed that the basement room of the Library had

been secured. The tenancy agreement was actually signed on 9th April 1929, the signatories for the Club being Henry Youmans, George Seaman, Sidney Briggs, James Godber, Fred Riley and Arthur Smith the General Secretary. Representing the Borough of Ilkeston was the Town Clerk, Emrys Williams. The tenancy was to be on a year by year basis until notice be given by either party and the net rent was set at £10 per annum. The agreement stipulated that the premises were not to be used for the sale of any goods or merchandise, or as a laboratory or workshop, or for residential or sleeping purposes, nor to carry on or permit any vocation which may attract to the premises persons of an undesirable character. The outer wall was not to be used for any public announcement or to indicate the usage of the room other than a name-plate, the style and siting of which required the approval of the landlords. For the Arts Club the agreement was witnessed by Thomas Ball. Due to the low state of the Club's funds the first year's rent had been guaranteed by 'private subscription' - a few members had paid!

With their own premises secured the Club was able to have photographic and needlework meetings, Fridays and Mondays, and weekly Saturday whist drives. A temporary setback, in that the transfer of the Borough Treasurer's Office to the library took up the darkroom, was reversed when a new room was built after negotiations between the Club and the Library Committee.

The long tenancy of the basement terminated in 1969, the room being required for other purposes. The Club was offered a single-storey building by the side of the Library for the 1970-71 Season. Club Secretary David Johnson obtained a quotation for forty polypropylene nesting chairs at £2.5s.0d. each to furnish the new room. These were purchased. The room itself was barely adequate with its narrow tapering shape, but it had to suffice, until a further move in 1975, to the Flamstead room of the Cantelupe Centre. This room was



Abbotsford Centre

Photo: W.A.V.E.

more appropriate for the Club's meetings, being spacious and comfortable, but a drawback proved to be the intrusiveness of the adjacent Youth Club disco. From 1978 to 1980 Ilkeston Photographic Club met at the Ilkeston Co-operative Society, moving to Kensington School in October 1980. In 1981 the Arts Club had a short tenancy at the Library before settling in October 1982 in the Friends Meeting Room of Erewash Museum. The Hayloft, as it is now, is the room above the rebuilt stable block of the Museum complex. This attractive room fulfilled most of the requirements of the Club and served as a most pleasant base until 2000 when a move to Shopmobility in High Street was made.

The Photographic Club had meanwhile transferred to Chaucer Junior School (1987), The Enterprise Sports & Social Club, Station Road (1988-89), the Library (1989-92) and the Erewash Museum (1992-2000). The Photographic Club's

programme was amalgamated with that of the parent club in 1998 and this format remains at Shopmobility. Tenancy of the Abbotsford Community Centre from 1997 provides the Arts Club with an additional facility for Monday painting workshops and demonstrations.

Shopmobility



Photo: W.A.V.E.

Finances and Fundraising

The level set for annual subscriptions, the main source of the Club's income, has always demanded scrupulous attention at the AGMs. The 1903 figure of 2s.6d remained in place until 1950 when it was doubled. Put into context, in 1920 a pound of butter would have cost little more. The subs. rose periodically to fit the Club's financial situation and special rates for husband and wife, student and visitor (per evening) were later introduced. The whist drives and socials of earlier decades, three of which in December 1923 showed £6.0s.0d. profit, provided steady income.

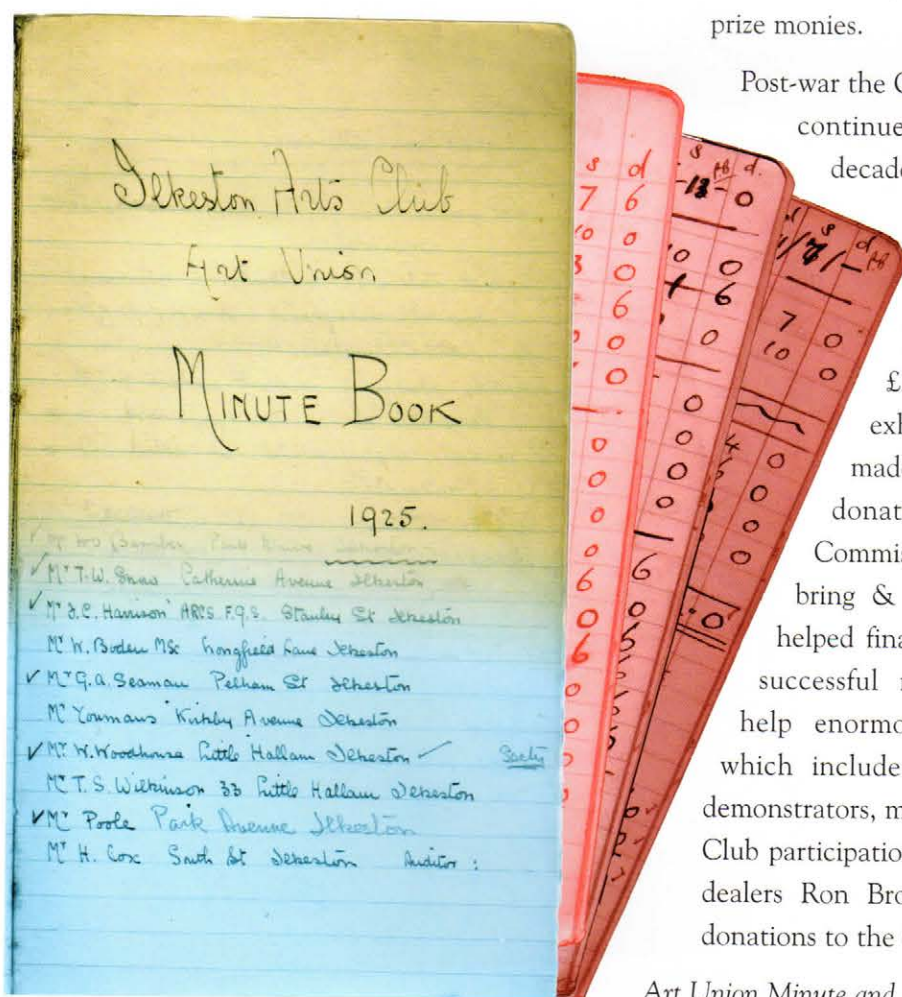
For the 1911 exhibition an Art Union Ballot took place. This was a form of lottery, begun nationally in the 1860s, where draw tickets were sold for prizes of paintings and photography. The Department of Art & Science dictated that Art Unions should have governing bodies and publish accounts and the distribution of prizes. The Club's Art Union minute book 1925-1929 also gives the following details of the 1911 ballot. There were 16 prizes (7 paintings and 9 photographs) to a total value of £13.14s.0d. The profit was £1.6s.6d. It is

difficult to see the benefit of this scheme to the finances of the Club as there were printing and advertising costs, Secretary's expenses and Auditor's fees to be paid. In 1929, of the 1000 sixpenny tickets issued to Club members to sell, 541 were returned unsold, a similar percentage as the previous year.

Commissions on sales of exhibition paintings, bring & buy sales and coffee mornings have helped finance the Club over the years.

Items of expenditure on Annual Exhibitions 1927-1937 included caretakers' wages, posters, tickets and advertising in the press and on trams, carriage and packing of pictures and staging the exhibitions. The exhibition of 1937 suffered a loss of £9.0s.0d. though the receipts amounted to over £14.0s.0d. Apart from the room hire, the biggest expenditure was that of prize monies.

Post-war the Club's financial situation was steady and continued to be so throughout succeeding decades with occasional demands on funds for the replacement of equipment. In 1958 The Town Council approved a reduction in the rental of the Town Hall for the Club's exhibitions - from £30.5s.0d. to £17.10s.0d. For later exhibitions in the Church no charge was made but a large bottle was set up to accept donations towards the lighting costs. Commissions on sales of exhibition paintings, bring & buy sales and coffee mornings have helped finance the Club over the years. Highly successful raffles run by dedicated members, help enormously towards the Club's expenses which include the payment of visiting lecturers, demonstrators, musicians and adjudicators. Recent Arts Club participation in 'promotional days' of Ilkeston car dealers Ron Brooks Ltd. have resulted in generous donations to the Club by the company.



Art Union Minute and Account Book

JACK BARKER 1896 - 1937

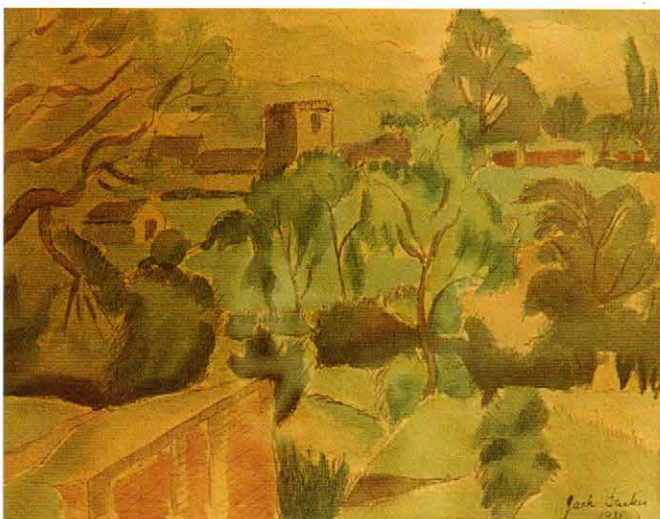
John Evans Barker's brief life was fascinating.

At Heanor Technical School he captained the school football team that included Harry Storer* and also played cricket for Ilkeston Rutland C.C.

At sixteen years he worked as a lace designer in Long Eaton and on the outbreak of war he served in a machine-gun section in France, during the course of which he was partially deafened. Post-war he returned to the lace trade until the Depression when he took over his father's butchers shop in Bath Street, Ilkeston. The hundred-year-old family business was demanding but Barker managed to find time to paint, usually on Sundays, Wednesdays or in the small hours, displaying the results in the shop. He motored to the Peak District, the Fens and to collieries with George Bissill for painting subjects. His friendship with Bissill and particularly with Claude Flight RBA., with whom Barker spent a holiday in France, served to bring his work to the attention of the London Galleries.

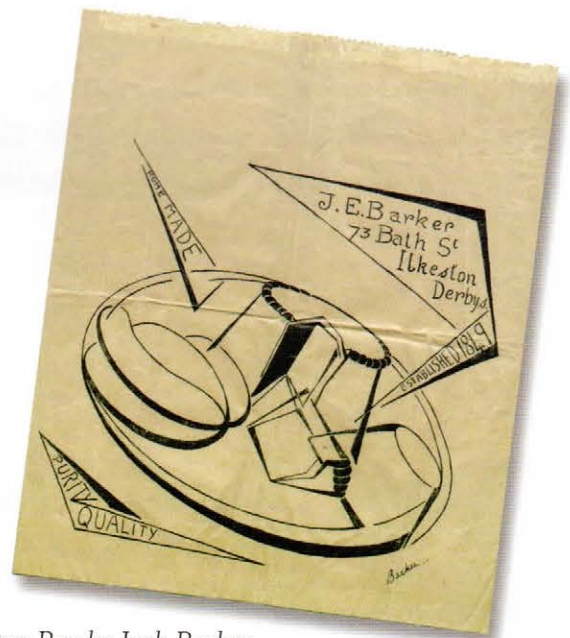
Some of his works exhibited at the Redfern Gallery in 1931 were selected to tour the British Isles with an Arts League of Service Exhibition.

A very successful exhibition at the Ward Gallery convinced him to go professional as an artist and he decided in 1935 to sell the butchery business and move to the village of Hurstbourne Tarrant, Hampshire. Sadly he was not to enjoy the fruits of his success for very long and his death, after an operation, came as a shock to his numerous friends and acquaintances.



JACK BARKER
Photograph by S.E. Briggs.

Erewash Museum Collection



Paper Bag by Jack Barker
Andrew Knighton Collection

*Harry Storer played football for Derby County and later became the manager. He also played cricket for Derbyshire C.C.C.

'Untitled' by Jack Barker Erewash Museum Collection

The Annual Exhibitions

Standing on the western side of Ilkeston Market Place is the Italianate Town Hall, built in the 1860s. In former times it served not only as the local administrative centre, but as a focus for public activities of many kinds - concerts, dramatic productions, dances, meetings and exhibitions - until local government reorganisation in 1974. From 1903 till 1974 the Ilkeston Arts Club had the use of the main hall for its exhibitions. The first floor hall was of good size, rectangular with a platform against the west wall. Left and right of the entrance in the east wall stood huge mirrors in front of which screens were carefully erected for the exhibitions.

The Ilkeston Advertiser said of the First Annual Exhibition in November 1903 that "The large room of the Town Hall was engaged and the walls were utilised to their fullest extent . . . those responsible for the work of hanging and fixing the exhibits accomplished their task in an eminently satisfactory manner". No early account is available of the method used for fixing the Club's hessian-faced screens to the walls of the hall. Many of the original screens were utilised in later decades when the following method of staging was used:- six-foot high screen units, joined at the head by wooden battens, lined the north and south walls. They were tied with cord or string to window fittings, heating

pipes and radiators. Down the centre of the hall were two or three H-shaped screen bays and towards the platform was a trestle table arrangement for embroidery and other crafts. The screens had several lateral wooden supports into which nails were firmly tapped to hang pictures, and mounted photographic prints were secured by drawing pins.

The screens would have been delivered by wagon from storage to the Town Hall, passing through the archway to the foot of the steps leading to the rear door of the hall. From there they would be laboriously carried into the hall. Subsequently a lorry was used to transport the screens from Croft Yard Storage Depot in Pimlico, off the Market Place.

For the 1903 exhibition entries were invited from Nottingham, Derby, Belper, Ambergate and elsewhere with several prominent artists responding. Paintings by J.F. Herring Senior and Wright of Derby were loaned by Mr F. Darwin Huish, Ilkeston Clerk to the Magistrates. The exhibition was previewed on Friday, 27th November by the Mayor of Ilkeston, Ald. Charles Maltby JP, accompanied by the Mayoress, Mrs Maltby. There was orchestral and vocal entertainment in the evening.

HUNT SHIELD Best print in Exhibition
L.WHITE TROPHY Best monochrome child study
T.W. SMITH CUP Best landscape print or slide
W.V. ROACHE CUP Best slide
SAXTON CUP Best colour print
LIMB CUP Best portrait, print or slide
GODBER TROPHY Best monthly competition slide
S.E. BRIGGS CUP Best beginner
H.WALKER SHIELD Best monthly competition print



On Saturday and Monday the exhibition was open to the public from 10am. to 10pm.

Members were allowed free selection of their work in watercolours, oils, black and white work, applied arts, crafts, photographic prints, slides and needlework for the exhibitions. Medallions, shields, certificates and cash prizes were awarded. The first trophy was presented in 1904.

Painting adjudicators have included the celebrated Derby artist Ernest Townsend, and both Arthur Spooner and Joseph Else of Nottingham School of Art. With the removal of the Arts Club Exhibition in 1974 to St. Mary's Parish Church, opposite the Town Hall, came new problems, primarily how to create exhibition spaces. Using the Chantry Chapel for the paintings required that the pews be repositioned, facing outwards, along the south wall, the Chancel and the eastern end of the chapel, to form an open space. The photography section was created by lifting several heavy pews in the north aisle and placing them atop other pews to form a bay which was connected by screens to the Unity Chapel at the western end of the north aisle, from which furniture had been removed. A selection of photographs by the adjudicator were to be displayed on the connecting screens.

The screens, now stored at the Erewash Museum, were delivered and set up in a similar way as for the Town Hall. On occasions when transport was not available the screens were manhandled across an invariably windy Lower Market Place, an exercise requiring the control of an expert windsurfer! In 1973 several of the screens were replaced by 6' x 6' units assembled by Club members on the platform of the disused Ilkeston North Station (premises of Les Clark, garage owner and Arts Club member) in Heanor Road.

With preparations completed, usually on Thursday evenings, the Church was ready for the receipt and display of exhibits on the Saturday. From 10am. on Saturday the incoming works were checked in against the catalogue and passed on for hanging. The photographs on standard sized mounts went up quite smoothly, not so the paintings, which were of varying sizes. The pictures were juggled and juxtaposed, with no foreknowledge of their dimensions, by the hanging committee under pressure to complete the task before the arrival of the judge in the early evening. The award winners were contacted by the Painting Secretary to attend the Opening Ceremony on the following Monday evening. From the 1933 exhibition in the Town Hall until the Museum era, the exhibitions had been held from Monday to Saturday.



JACK BARKER CUP Best oil or acrylic painting
ALEC SHAW TROPHY Best portrait
or figure painting
BILL GRAYSON TROPHY Best soft chalk pastel
L. CLARK TANKARD Best other media artwork
SIR ROBERTSON KING CUP
Best watercolour painting
JOHN LALLY CUP Best local subject
(alternates annually between photography &
painting and replaced the Rotary Rose Bowl)

The Annual Exhibitions

In the light of difficulties encountered in mounting exhibitions at St. Mary's Church it was decided at a meeting in 1992 to seek an alternative venue for 1993.

The Erewash Museum was favoured as mentioned on Page 7 and the Club was allotted a month for the exhibition, the Museum being open four days per week. The exhibition room (the John Lally Gallery) with its panelled walls required little preparation prior to hanging, other than placing panels over windows and a door and positioning two free-standing screens centrally. Ceiling-mounted spotlights were also an improvement on those of St. Mary's Church. Here the paintings were hung using mirror plates. The display area being smaller

The 'Peoples Choice' award has recently been instituted, for which visitors are invited to vote for their favourite painting or photograph.

than that of the Church, a restriction had to be placed on entries and the 'Open Section', an attraction in the Church, was abandoned. Nevertheless ninety nine pictures were tastefully hung. The photographic display of sixty two prints was mounted in the Friends Room in the Stable Block and the slides were shown on Saturdays. The Official Opening took place there on Thursday 22nd April 1993.

The introduction of 'Artists in Residence' days has given the public an opportunity to observe Club members sketching and to chat about their work and the Club's activities.

A few changes have been made in the presentation of the exhibitions at the Museum since 1993, one of which being the labelling rather than numbering of the exhibits. The 'Peoples Choice' award has recently been instituted, for which visitors are invited to vote for their favourite painting or photograph. The reintroduction of crafts provides a welcome diversity to the exhibitions.



The Town Hall, Ilkeston (1954)



St Mary's Church (1975)



*Hayloft, Erewash Museum (2001)
Photo: Ilkeston Advertiser*

DAVID JOHNSON 1924 - 2002

In 1996 the Ilkeston Arts Club honoured David Johnson with the Vice-Presidency and Life Membership of the club in recognition of his long service and dedication. He joined the club in 1946 and served as Photographic Secretary for twenty years from 1949. In 1969 he succeeded Arthur Smith as General Secretary, a post he held until 1996. David Johnson served as Chairman of Ilkeston Photographic Club from 1976 to 1985. A gifted and artistic photographer, the high standards he maintained gained him many admirers and awards. His audiovisual presentations were memorable, not just for the excellent photography, but also for the sensitive choice of music he used to create a particular mood.

David Johnson ran the family ironmongery business and funeral service in Station Road, Ilkeston

End of Season (1980) by David Johnson



for almost sixty years. In later decades the business has included an art supplies department. A man of vitality and enthusiasms, David Johnson found time to pursue other interests despite the demands of business. He was a talented pianist and organist, a busy lecturer and latterly took up model-making.

A keen Rotarian, he arranged organ recitals in aid of local charities. In 1999 he was a founder member of Ilkeston Photo Club 2000, a club in which his interest in digital photography developed.

On his death in January 2002 the Ilkeston Rotary Club planned a Special Memorial Concert and invited the celebrated organist Nicholas Martin to play some of his favourite music.



MEMBERSHIP

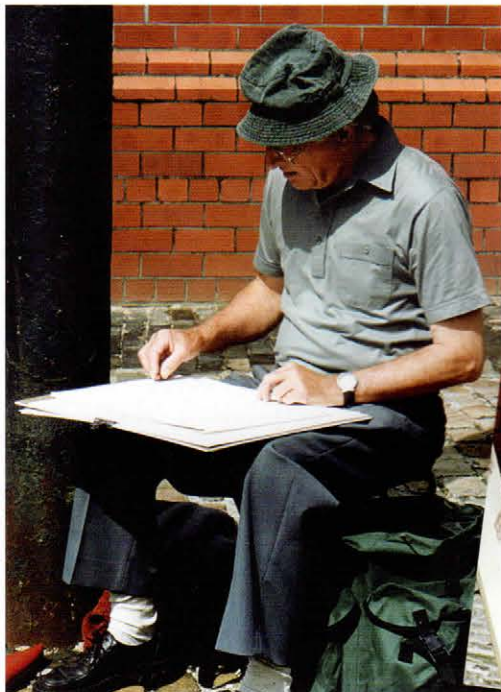


Photo: Peter Jordan

- David Mallard
- Barbara Mallard
- Eric M. Ladbury
- Mary King
- John King
- Ron Jowett
- Ken Jones
- Les Hollome
- Jean Harvey
- Tamzin Grayson
- Val Grayson
- Chris Grace
- Brian Fairholme
- Yvonne Derbyshire
- Roy Daykin
- John Cundy
- Danny Corns
- Barbara Corns
- Shelagh Cooper
- Roy Clarke
- Tony Campbell
- Pat Campbell
- Reg D. Bratt
- Hazel Bratt
- Val Barnett
- Marion Axford
- Jessie Annable
- Annie Allen
- Iris Aldred

Membership

2001 - 2002

- Len Wright
- George W. Wells
- Mary Webster
- W. Alan Webster
- June Wallbank
- Sean Stevenson
- Colin Stevenson
- Liz Sharratt
- John Scollins
- Veronica Schofield
- Eric Scattergood
- Pam Saunders
- Phyllis Samples
- Ken O. Samples
- Iris Ryan
- Maurice Rossiter
- Jennie Rigby
- John Richards
- Margaret Priestley
- Frank Priestley
- Joan Pochin
- Jean Parsons
- Mary Parsons
- Harold W. Parsons
- Joyce Page
- Brian Ottewell
- Jayne Oakshott
- Colin Millns
- Joan Miles



Photo: Peter Jordan



Photo: Ilkeston Advertiser

The Winter Programmes



Alternative Ways of Working with Watercolours
by Marianne Cox

Putting together the Winter Programmes over the years, the Club has endeavoured to present the 'Arts' in the broadest sense and to cover a range of interests and activities.

In earlier decades the seasons began in October and ended in April, but in more recent times the first meetings have been held in September, with the seasons closing after the Annual Exhibition and AGM.

The Arts Club has always been reliant on the membership to contribute their knowledge and expertise to the Winter Programmes. Among the early members who gave talks to the Club were A.J. Trueman, J. Tyrrell, R. Kitchen, F.C. Harrison, A. Smith and J.D. Godber. Regular guest lecturers included A. Marshall ARIBA. FRPS., H.M. Sheppard ARPS. and a particular favourite H.J. Podmore ARPS.

A staple lecture for many years has been of the travelogue kind, as were *A Tour of Belgium* (1905), *Dresden* (1908), *Across Canada* (1922) and *Ghost Towns in Nevada* (1975). A 1927 talk which 'lifted the veil on the dark continent' was *My African Wanderings* by J. Granville Squiers FRGS. who spent twelve years in the bush and was shipwrecked twice! In a more reflective



Rags to Riches by Judith Colby

Photo: W.A.V.E.

mood were lectures on *Two Derbyshire Poets* by Teresa Hooley (herself a notable poet), *The Early Life of D.H. Lawrence* by Alderman W.E. Hopkin JP. CC. who was a friend of the author, and *Poetry of Edith Sitwell* by Mrs Gough.

The breadth of topic that lecturers have brought to the Club is exemplified by the following selection: *How We Got Our Surnames* (Prof. Ernest Weekley), *Extinct Giant Reptiles* (Prof. A. Smith Woodward), *My Experiences as a Fortune Teller* (Elsie Gadsby), *Local Canals* (Ike Argent), *Polish Customs* (Krystina), and *Journalism* (Paul Trueman).

Musical Evenings have been an important feature of the Club's programmes, in April 1903 the Vicar of



Storyteller and musician Gary Breinholt

Ilkeston, the Rev. E. Muirhead Evans lectured on *Music in General* with illustrations on the piano. To open the 1913-14 season a trio of musicians and two singers entertained almost a hundred Arts Club members and friends at a Social & Dance.

Club member Ken Clarke presented *Music For You* (taped classical music) for several years and David Johnson gave similar presentations, sometimes in a quiz form or with slides. *My Kind of Music* (members' own musical items) continues to be popular. Musicians performing at the Club have included the nine-strong Wirksworth Classical Guitar Circle under tutor Jonathan Priestley, local organist Kevin Holt, lute player Dale Hodgkinson and keyboard & drums duo RAV 2.

Quiz nights, literature readings (poetry, prose, articles etc.), performance of playlets and social 'get-togethers' form part of the programmes.



Travels in South Africa by Reg. D. Bratt Photo: W.A.V.E.

Visits to the theatre and concert hall have included productions of *H.M.S. Pinafore*, *The Rivals*, *Lady Day at Emerson's Bar & Grill*, *Mary Stuart* and performances by the Halle Orchestra and James Galway & Marissa Robles. Members have also enjoyed back-stage tours.

The programmes have highlighted many crafts:- pottery, needlework, book-binding, glass-engraving, woodworking, pressed flowers, sugarcraft, tincraft, egg decoration, bobbin-lace making and so on.

Practical painting sessions and lectures on art & architecture have naturally been regular features as have painting demonstrations by members and visiting artists. Among the latter the Club has welcomed G.H. Vincent Plant, Stan Price, Mike Webster, Laurie Williamson, Eddie Askew, Stephen Ashurst and Andrew Macara.

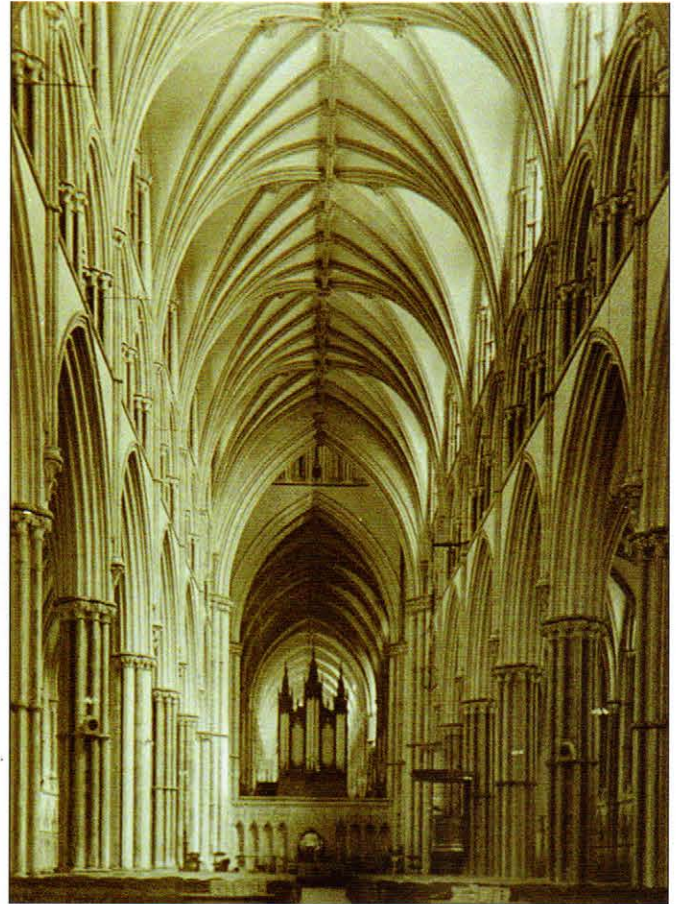


History of Art & Design in Textiles by Myra Challand

From 1976 until 1998 when the Ilkeston Photographic Club combined with the Arts Club in assembling the annual programmes, the Photographic Club had autonomy over its programme. As with the Arts Club, the photographers' season opened with an informal introductory evening. Visiting lecturers and demonstrators, many of whom were frequent guests, were found through the Club's membership of NEMPF, of their number are Ron Horsfield ARPS., Ken Bryan and Eric Moore APAGB. A full Photographic Club programme included practical demonstrations, lectures, internal and inter-club competitions, critiques, portrait sessions and the viewing of the Annual NEMPF Exhibition slides which tour the member clubs. Since 1998 the Photographic Club has alternate Thursday evenings in the Arts Club programme. These take the form of slide lectures and members' photography competitions (2 open & 2 set subjects). An innovation has been a competition for the best print produced by means of a 'single use' camera.

Vibrant programmes for painters are provided at the Abbotsford Community Centre every season. Projects are set and practical advice is offered by experienced painters who also demonstrate in various media. Visiting artists give lectures and demonstrations. There is also an active Summer Sketching Group.

A Gallery of Photographers



This Page

Top left: **Arthur Thornhill**- Portrait of Carol

Top right: **Harold Walker** - Lincoln Cathedral (1950)

Above: **Pat Campbell** - Redhill Landscape (1999)

Right:

Jack Hutchby - Cottage, Cat and Fiddle Windmill (1982)

Opposite Page

Left: **Eric M. Ladbury** - Impressions of Hills Wood (1999)

Top right: **J.D. Godber** - Three Fishers

Bottom right: **S.E. Briggs** - Portrait of Phyllis (1934)



Past and Present



Field Trips and Excursions



Ilkeston Arts Club Annual Outing - Worcester 1969.

The location of Ilkeston, in the heart of England, is ideal for access to many interesting and attractive areas of the country.

This was advantageous when the Arts Club was planning Annual Outings by coach in the latter half of the century. Early field trips tended to be in the locality, such as group walks to Trowell Mill, Cossall, Strelley and Dale Abbey, the latter described as “a pleasant jaunt across the fields”. Parties travelled by rail to Bakewell in 1905 and a couple of compartments were reserved for Club members on the Boston trip of 1907. It was at Boston dockside that an unlucky photographer lost his footing and ended up in the mud of the falling tide! Not all of the outings that had been introduced into the programme were well attended, nevertheless in 1929 trips took place to Wingfield Manor, Kings Mills, Wirksworth and Diseworth. In 1936 Breadsall, Woodhouse Eaves, Clifton, Newstead Abbey, Repton and Ratcliffe-on-Soar were visited via train or bus. For an outing to Newark in 1938 two or three members offered the use of their cars. An evening trip in 1961 to Toton railway sidings would doubtless have provided dramatic imagery for the photographers.

A fixture since the late 1960s has been the Arts Club Annual Outing. Despite the introduction of the tachograph which set maximum daily coach mileages, the Club was able to have day trips to Norwich, York, Worcester, Chester, Windsor, Oxford, The Cotswolds, Bridgnorth, Bath, Whitby, Lincoln, Blenheim Palace, Durham, Stratford-upon-Avon, Haworth, Liverpool,

The Thames Barrier and Shrewsbury, often with short stays en route. Small minibus parties visited the Joseph Wright Exhibition at the Tate Gallery, the Alfred Sisley Exhibition at the Royal Academy, the Lady Lever Gallery and the Walker Gallery, Liverpool and Hay-on-Wye, world famous as a centre of the second-hand book trade.

Many ad hoc groups of members have visited such events as art conventions, craft fairs, lectures, demonstrations and exhibitions.



Sketching - Summer 2002

Competitions and Challenges



Ripples & Reflections by Eric M. Ladbury

A feature of the Photographic Programmes since the 1950s has been the Club Monthly Competitions, usually themed, as in 1974-75 with *Architecture*, *Landscape*, *Industry* and *Portraiture* as subjects.

This continued after the formation of Ilkeston Photographic Club and remains today as an integral part of the programme. The competitions consisted of three categories - Colour Prints, Black & White Prints and Transparencies (slides) and entrants could submit up to three of each. The photographer with the best cumulative score for five out of the six competitions received the Monthly Competition Trophy.

Competitions with other photographic clubs, by way of 'Slide and Print Battles' that began with Ripley in 1961, became annual events. With a similar format to the Monthly Competitions the Club took on other NEMPF clubs on a home-and-away basis. The work was judged by two neutral NEMPF judges, one for each venue. The photographers were often surprised to see one judge's assessment of their work being unbeknowningly contradicted by the other in the return match and the points score reversed.

The lack of broad support for the Inter-Club competitions was probably due to a lack of individual self-confidence rather than apathy. Attendances at 'home matches' of the Photographic Club fluctuated wildly, with just a handful of visitors or over twenty. Similarly for an 'away leg' there may have been a convoy of cars or just three members travelling in one car. Club members who participated found it interesting to see

'how the other half lived', and were often amazed by the variety of venues, the most common being an upstairs room of a Public House. Other 'battlegrounds' were the upper floor of a Barn with its own coal fire and soft furnishings, a Classroom at a Nursery School with tiny seats too small for mature posteriors, a Factory Canteen which echoed and a former Chapel with a ghost-like aura.

For away matches, distance and/or the weather were often factors influencing attendances and the weather was a problem on the occasion of a Club meeting in the Hayloft when a member took it upon himself to phone others with the news that "the meeting is cancelled due to snow". That evening the speaker addressed just two members before they went home - in the rain!

White Tulips in Vase by Eric M. Ladbury



A Gallery of Painters



This Page

Above: **Fred Riley** Straw's Bridge

Top Left: **Gertrude MacDonal**

A Corner of the Harness Room

Top Right: **Les F. Clarke** Derbyshire Quarry

Opposite Page

Top Left: **David Mallard** Warm Journey (2001)

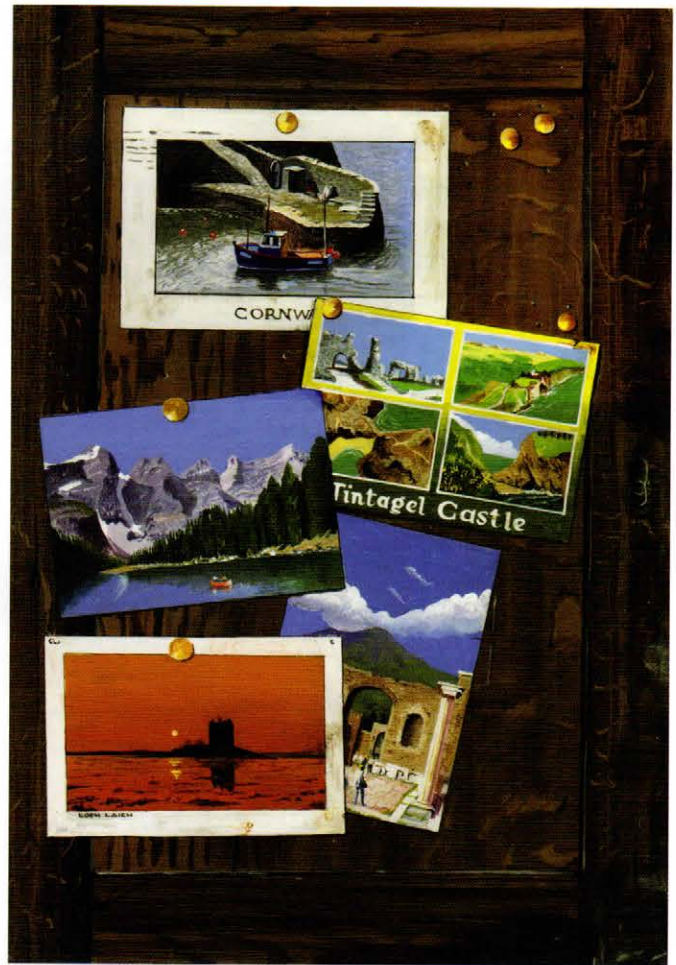
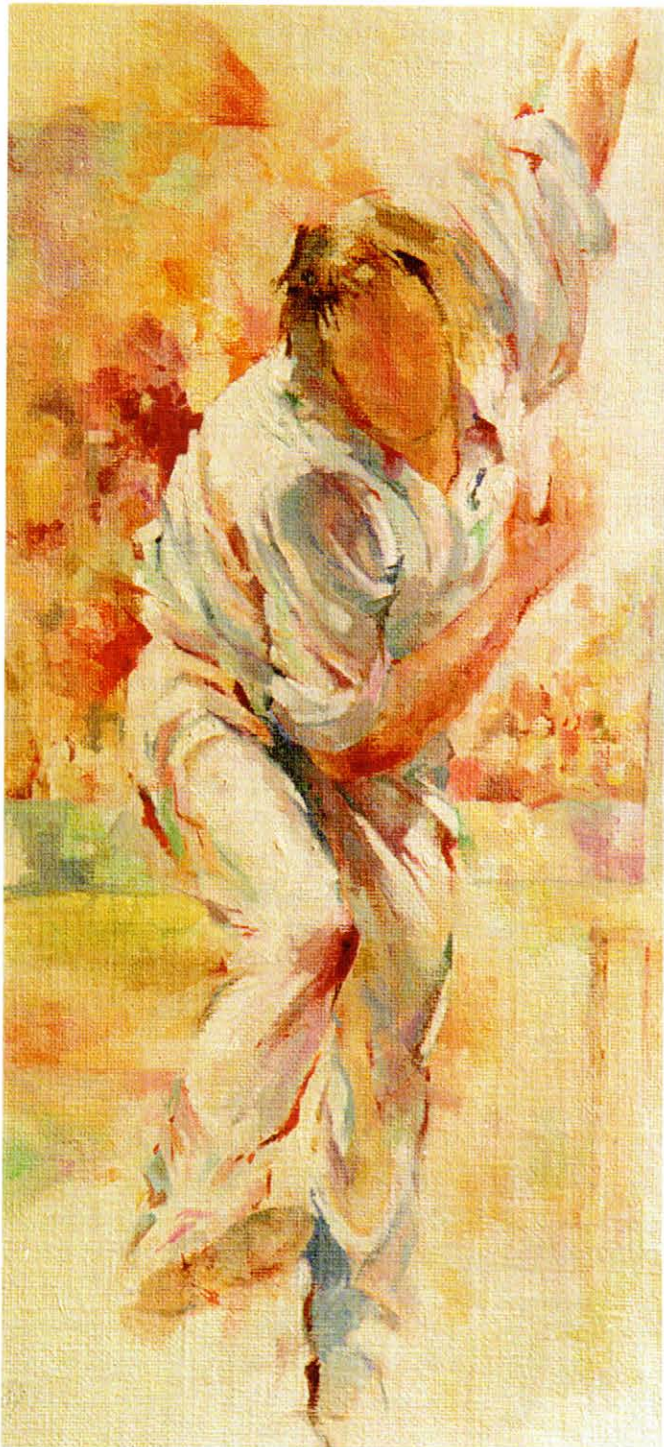
Top Right: **Sam Wardle** Ogmore, S. Wales (1932)

Left: **John Cundy** Quick Release (2001)

Centre Right: **Alan Webster** Wish You Were Here (1996)

Bottom Right: **David H. Beardsley** Untitled (1909)

Past and Present



A Selection of the Century's Servers, Achievers and

KEY - IAC - Ilkeston Arts Club. IPC - Ilkeston Photographic Club. Exhib. - Exhibited. Exh. - Exhibition. Ilk. - Ilkeston.
(3) - Number of paintings exhibited.

ALLEN Albert 1868-1930

Photographer. South St., Ilk. Mechanic at Sudbury's Factory, Market St., Ilk.

ALLEN Annie

Painter. West Hallam. Fundraiser for IAC.

ALLEN Cora Doreen

Painter/Photographer. South St., Ilk. Shakespeare & Allen, The Needlework Shop.

ARME A. Winnie

Photographer/Painter. West Hallam. IPC Sec. 1979 - 81.

BALL Thomas

Photographer. 'Burwood' Catherine Ave., Ilk. Headmaster Hallcroft School 1936-42.

BAMBER Harold Ormerod 1871 - 1950

Photographer. Lower Stanton Rd., Ilk. Teacher at Chaucer, Granby and Hallcroft Schools. Nicknamed 'Tricky'.

BEARDSLEY David H. 1873 - 1924

Painter. Flamstead Rd., Ilk. Foreman Warper. Exhib. Nott'm. Castle (37).

BESTWICK Nelson d. 1980

Horologist. The Croft. Lower Stanton Rd. Newsagent, The Market Place, Ilk.

BESTWICK Terry 1929 - present

Painter. Ruddington Lane, Nottm. (1955). Now Blakeney, Norfolk. Ilk. Architect. Professional Artist.

BRAMLEY Reg. J.

Photographer. Ilkeston.

BRIGGS Sidney Ellison d. 1951

Photographer. 'Plaidy' Heanor Rd., Ilk. Photo. Sec. 1930 - 49. Solicitors clerk.

CAMPBELL Patricia

Photographer. Ilk. Married to T. Campbell. IAC Gen. Sec. 1996 - 99, 2000 -.

CARPENTER Samuel

Painter. Alvenor St., Ilk. Founder member IAC.

CHAMBERS J.F.M.

Photographer/Patron. Wollaton Rd., Beeston, Notts.

CHAMBERS Frederick 1849 - 1912

Photographer. Stanton by Dale. Vice President IAC 1903. Mayor of Ilkeston 1911. Draughtsman at Boiler Works in Rutland St.

CLARK Leslie 1910 - 1984

Painter. Oakwell Drive, Ilk. Garage Proprietor. Donated Les Clark Tankard Trophy.

CLARKE Leslie Frederick 1907 - 2000

Painter. Bentley Ave., Bakersfield, Notts. Teacher. Studied at Nott'm & Hull Schools of Art. Exhib. with IAC from 1930 - 92.

CLARKE Kenneth

Photographer. Ilk. IAC Treasurer 1971 - 92. Photo. Sec. 1969 - 72.

CORNS Danny

Photographer/Local Historian. Trowell, Notts. Co-Author of 'Bygone Stanton'.

COX John Edwin 1856 - 1921

Photographer. 'Overdale' Oakwell Drive, Ilk. Borough Librarian. IAC Gen. Sec. 1912 - 20. IAC Founder member.

CROMPTON Charles R. 1869 - 1953

Stanton Hall, Stanton by Dale. Patron IAC 1903 and Vice-President for 50 years. Chairman of Stanton Ironworks.

CUNDY John Michael 1937 - present

Painter. Ilkeston. Worked in printing. IAC Painting Sec. jointly 1973 - 80. IAC Archivist. Exhib. Derby Open (prizewinner) & Nott'm Castle.

DANIELLS Eric W.

Photographer. Norman Street, Ilk. Butcher.

DAYKIN Roy

Painter. Ilkeston. Mechanic. Exhib. Cleveland Biennale & Derby Open (prizewinner).

DOBSON Muriel A.

Needlework Secretary IAC 1903 - 13. Daughter of the Vicar of Ilk., Rev. E. Muirhead Evans.

EDWARDS Irene M.

Photographer. Oakwell Dr., Ilk.

FAIRHOLME Brian

Painter. West Hallam. Graphic Designer. Studied Derby School of Art. Nephew of Joe Fairholme. Exhib. Derby Open.

FAIRHOLME Joseph 1893 - 1956

Painter. Green Lane, Ilk. Uncle of Brian Fairholme. Exhib. with IAC from 1927.

FARMER Leslie Booles d. 1973

Painter/Photographer. Derby Rd., Ilk.

FLETCHER Fred d. 1922

Photographer. Chemists in Bath St., Ilk.

FERN John G. (Jack)

Heraldry. Scarborough Ave., Ilk. IAC Chairman 1971 - 73.

FOSTER Albert Edward

Painter. Mill St., Ilk. Coalminer.

GADSBY Elsie 1912 - 1999

Painter/Author. Kirk Hallam. IAC Member 1966 - 91. Wrote poetry & autobiographical books, three of which were broadcast.

GODBER James D. ARPS. d. 1970

Photographer/Painter. Wilmot St., Ilk. IAC Hon. Treasurer 1936 - 42 & 1946 - 70. Won 2nd Prize in a national newspaper photographic competition 1930.

GRAYSON William E. (Bill) 1947 - 1997

Painter. Ilkeston. Headteacher. IAC Chairman 1997. Instigated IAC Newsletter. Soft chalk pastel Trophy awarded in his memory.

HALL Peter AMPA. 1929 - 1985

Photographer. Hardy Barn, Shipley. Photographic business at 4 Bath Street, Ilk.

HARLOW H.L.

Photographer. Brook Hill, Loscoe, Derbys. Photographic business. Teacher at Heanor Grammar School.

HARRISON F.C. ARCS. FGS.

Photographer. Stanley St., Ilk. IAC Treasurer 1920 - 36.

HARVEY Jean

Painter. Kirk Hallam.

HARVEY Sheila

Painter. Shipley, Derbys. Studied at Nott'm College of Art. Taught in Derbyshire schools. Adult Education tutor. Professional artist. Exhib. Nott'm Castle.

HOLLAND John 1856 - 1944

Photographer. Millfield Rd., Ilk. (later Scarborough) Exhib. In 1st IAC Exh. Head mechanic at Sudbury's Factory.

HUNT Richard 1859 - 1912

Cotmanhay Rd., Ilk. IAC Founder member & Vice-President. An Alderman and Mayor of Ilkeston twice. Derbyshire County Councillor & JP.

HUTCHBY Jack

Photographer. Cossall, Notts. IPC Chairman 1987 - 97.

HOLMES Robert FRPS.

Photographer. St Andrews Dr., Ilk. (1975), moved to Leicester. Photographer for an Everest Expedition.

HOLT Peter FRPS.

Photographer. Ilkeston.

JOHNSON Evelyn

Painter. Kirk Hallam.

JOHNSON W.K. (Bill)

Kirk Hallam. IAC Hon. Treasurer 1992 - 96.

KEMP Gordon

Photographer. Ilkeston.

KING Mary

Painter. West Hallam. IAC Painting Sec. 1996 - 99, 2000 - 01.

Married to J. King.

KING John

Painter. West Hallam. Newsletter editor.

LADBURY Eric M.

Photographer. West Hallam. IPC Chairman 1985 - 87. Exhib. Derby Museum. 3rd prize in Novartists/Daily Telegraph's Vision of Science Photographic Competition 2002.

LEE Bernard O. 1906 - 1976

Painter/Wood sculptor. Kirk Hallam.

LIMB Eric C.

Photographer. Heanor Rd., Ilk. Member of Heanor PC. Donor of Limb Cup.

MACDONALD Gertrude 1874 - 1948

Painter. 'Netherlea' King George Ave., Ilk. Exhib. R.A. 1914.

Married to J.A. Macdonald.

MACDONALD John A. 1872 - 1953

Photographer. 'Netherlea' King George Ave., Ilk. IAC Chairman 1938 - 46 & 1947-49. JP. & Mayor of Ilkeston 1914.

MALLARD Barbara

Photographer/Silk Painter. Ilkeston.

MALLARD David J.

Painter/Photographer. Ilkeston. IAC Painting Sec. 1975 - 96. Exhib. Derby Open (prizewinner) & Nott'm Castle.

McDONALD David

Photographer. Trowell, Notts. (1989).

McINTYRE Duncan d. 1960

Painter. Taught at Hallcroft School 1931 - 60. Brother of G.A. McIntyre.

McINTYRE George Andrew 1907 - 1942

Painter. St Andrews Dr., Ilk. Teacher at Gladstone, Kensington and Chaucer Schools. Taught at Nott'm School of Art. Volunteered for the R.A.F. and was killed in action.

MERRY William

Photographer. Chemist and Colour Merchant, Market Place, Ilk. IAC Founder member & Vice-President. Alderman & JP.

MOORE Will. D.

Painter. Heanor Rd., Shipley. Exhib. Nott'm Castle (3). Spent several years in Southern England & lived for a while in USA.

MOSELEY Derek

Photographer. West Hallam. IPC Sec. 1992 - 94.

PALMER Roy

Painter. Jeweller's Shop in Bath St., Ilk. Exhib. Nott'm Castle (3).

PEAT John B.

Painter. Kirkby Ave., Ilk. (1934). Studied Nott'm College of Art. Commercial artist.

PRIESTLEY Frank

Painter. Crich. Exhib. Nott'm Castle.

PRIESTLEY Margaret

Painter/Potter. Crich. Married to F. Priestley.

RAYNOR J. Geoffrey

Photographer. Ilkeston. Headmaster, Kensington Junior School. IPC Sec. 1977-79. IPC Chairman 1997-98.

RICHARDS John

Painter. Ilkeston. Studied at Derby College of Art. Graphic Designer. Lecturer De Montfort University. Exhib. Derby Open, The Artist Magazine and Patchings.

RILEY Fred d. 1966

Painter. Pasture Rd., Stapleford, Notts. Blacksmith at Stanton Ironworks. Exhib. in every IAC Exh. up to his death.

RIPLEY George W.

Painter. Wilford Lane, Nott'm. Art Master at Ilk. Grammar School and Acting Head in 1950. Exhib. Nott'm Castle (31)

ROACHE W. Vincent

Photographer. Doctor. Trowell, Notts. Donor of W.V. Roache Cup.

ROACHE Hester 1900 - 1996

Painter. JP. Trowell, Notts. Married to W.V. Roache. Mother of Bill Roache (Ken Barlow) of 'Coronation Street' fame.

ROBINSON Alice Mary 1880 - 1954

Painter. Wharnccliffe Rd., Ilk. Married to Solicitor F. G. Robinson.

ROE Thomas Edwin 1870 - 1924

Photographer. Stanton Rd., Ilk. Proprietor of Printing Works in Bath St., Ilk. IAC Founder member.

ROSSITER Maurice

Photographer. Ilkeston.

SAMPLES Kenneth O.

Photographer. Ilkeston IAC Chairman 1990 - 97. IAC Photo Sec. 1971 - 77, 2001-. IAC General Secretary 1999 - 2000. NEMPF President 1998 - 2000.

SAMPLES Phyllis E.

Painter. Ilkeston. Married to K.O. Samples.

SAMPSON Gary

Painter. Studied at Derby School of Art. Art Teacher at Mortimer Wilson School, Alfreton, Derbys.

SAUNDERS Pam

Painter. West Hallam. IAC Treasurer 1996 - 99 & 2000-. IAC Painting Sec. 1999 - 2000.

SAXTON B.S.

Photographer. Marlpool, Heanor. Member Heanor PC. Donor of Saxton Cup.

SCATTERGOOD Eric

Photographer. West Hallam.

SCULLY William Patrick

Painter/Cartoonist. Blackhills Dr., Ilk. (1932). Studied Nott'm School of Art. Celebrated cartoonist of Punch, Esquire, Tatler, and Lilliput among others.

SEAMAN George Alfred

Photographer. Highcliffe, Wharnccliffe Rd., Ilk. Photography business in Pelham Street, Ilk. IAC Chairman 1932 - 36.

SHAKSPEARE William 1858 - 1939

Photographer. Stratford House, Market St., Ilk. Proprietor and editor of Ilkeston Advertiser. IAC Photo. Sec. 1903 and Treasurer 1903 - 20. Alderman & Mayor of Ilkeston 1908 - 09.

SHAW Alec 1945 - 1986

Painter. Heanor. Architect. Illustrated a series of children's booklets. The Alec Shaw Trophy is awarded in his memory.

SHAW Fred. W.

Painter. East St., Ilk. Worked for Walker's the printers. IAC Painting Sec. 1928.

SHAW W. (Bill) d. 1969

Painter/Photographer. Hobson Dr., Ilk.

SHELTON John

Photographer. Ilkeston. IAC Photo Sec. 1969 - 70.

SMITH Arthur BSc. FCS. 1882 - 1975

Photographer. Waterloo Rd., Nott'm. Teacher Hallcroft School 1919-21 & 1929-48. At Nott'm Univ. 1905. IAC Photo. Sec. 1903-28, General Sec. 1920-69. Son of T.W. Smith.

SMITH Grace I.

Needlework. Lower Stanton Rd., Ilk. Needlework Sec. 1913-70. Sister of Arthur Smith.

SMITH T.W. 1853 - 1931

Photographer. Lower Stanton Rd., Ilk. IAC Chairman 1903-19. Cashier at Oakwell Colliery Co. & Oakwell Brick Co.

... Servers, Achievers and Supporters

SNOW Thomas W. 1868 - 1937

'Ashgate' Quarry Hill, Little Hallam.
IAC Chairman 1919 - 32 & 1936 - 37.
Member of Town Council, 1914 - 18.
Worked for 38 yrs. for C. & F. Sudbury,
with 8 yrs. as manager.

SUDBURY H. Tatham 1877 - 1959

Photographer/Architect. 'Wayside' Ilkeston.
IAC Comm. member. Designed many
local buildings.

TATHAM Herbert 1882 - 1928

Photographer. Formerly of Albert St., Ilk.
Later lived at Redcar.

TAYLOR Arthur 1890 - 1945

Painter. 'Orchard House', High St., Ilk.
Taught Art at Granby & Bennerley
Schools. Member of RHS. Husband of Cllr.
Jessie Taylor, Mayor of Ilkeston 1944 - 45.

THACKER David

Photographer. West Hallam. IPC Sec.
1981 - 83.

THORNHILL Arthur W. 1926 - 1999

Photographer. Ilkeston. Commercial
Photographer. Dance Band Trumpeter.
IPC Sec. 1983 - 92.

TIMMINS Fred. W.

Painter/Engraver. Hallam Fields, Ilkeston.

TITFORD John S.

Photographer. Formerly of St. Mary's St., Ilk.
Taught at Paris Univ. & Ilkeston School.
Local historian & co-author of 'Ey Up Mi
Duck' books on local dialect.

TRUEMAN Alfred Job 1876 - 1946

Painter/Photographer. Lord Haddon Rd., Ilk.
IAC Founder member.
Managing editor of Ilkeston Pioneer
newspaper from 1923.

TURNER Richard W.

Photographer. Stapleford, Notts. IAC
Chairman 1959 - 71.

TURTON Charles H.

Photographer. High Lane West, West
Hallam & Barn Close, Eakring,
Notts. (1959). IAC Chairman 1954 - 59.

TYRRELL John H. 1852 - 1923

Painter. Hallam Fields, Ilk.
IAC Founder member.
Headmaster Hallam Fields School.
IAC 1st Gen. Sec. & Painting Sec.
1903 - 12.
Exhib. Nott'm Castle (19).
Died at St. Ives. Buried Park Cemetery Ilk.

WALKER Harold d. 1973

Photographer Derby Rd., Ilkeston.
Bank manager.

WARDLE Geoffrey E 1905 - 1996

Painter. Son of S. T. Wardle.

WARDLE Samuel T. 1875 - 1955

Painter. The Old Hall, Little Hallam, Ilk.
Exhib. in 1st IAC Exh. 1903.
Painting Sec. 1912 - 48.
Worked at Stanton Ironworks.
Former lace draughtsman.
Exhib. Nott'm Castle (37).

WEBSTER Mary

Craftworker. West Hallam.
Married to W. A. Webster.

WEBSTER W. Alan

Painter. West Hallam.
IAC Chairman 1998 - 2001.

WELLS George W.

Photographer. Ilkeston. IPC Sec.
1995 - 2000.
IAC Chairman 2001 -

WHITE Leonard ARPS. AIBP.

Photographer. Ockerby St., Bulwell, Notts.
& Glenthorne Rd, Holmer, Hereford
(1971). Donated the L. White Trophy.

WHITEHEAD Norman R.

Painter. 'Hollydene' Wharncliffe Rd., Ilk.
Exhib. Nott'm Castle (8).

WILKINSON Thomas Silvester

1891 - 1954
Lower Stanton Rd., Ilk. IAC Chairman
1937 - 38, 1946 - 47, 1949 - 54. Born in
USA. Taught at Granby & Gladstone
Schools. Headmaster Granby School 1939.
Retired 1953.

WOOD Geoffrey Arthur

Painter. Pelham St., Ilk.
Exhib. Nott'm Castle (3).

WOOLLISCROFT Annie A. 1833 - 1920

Painter. Bath St., Ilk. Married to Chas.
Woolliscroft JP. Exhib. Nott'm Castle (3)
Mother of Gertrude MacDonald.

WOOLLISCROFT George W.

OBE. JP. CC. 1865 - 1948
Photographer. Son of A & C Woolliscroft.
Lived at Ockbrook.
Mayor of Ilkeston 1925-26.
On staff of Midland Railway,
Derby from 1890.

YORKE Charles J. b. 1877

Painter. St. Mary's St., Ilk. Born in Ilk.
Painter & Decorator, Paperhanger.

YOUNG Henry

Photographer/Cabinet maker.
Kirkby Ave., Ilk. (1929).

GEORGE BISSILL 1896 - 1973

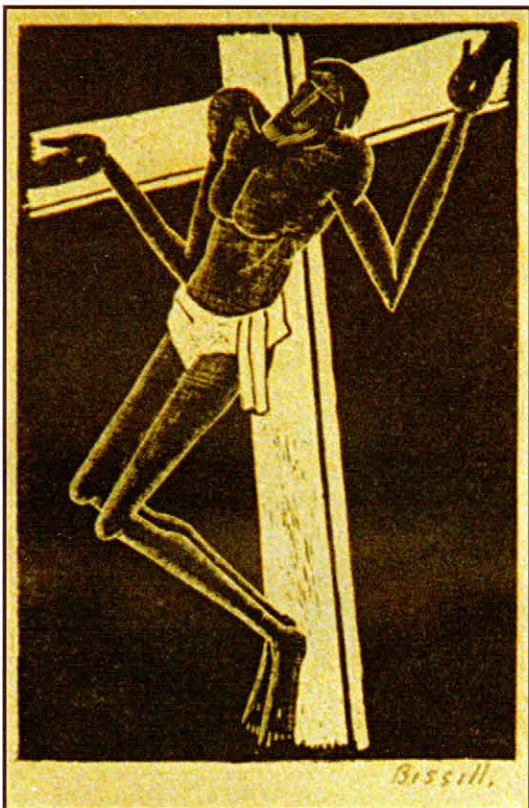
GEORGE
BISSILL
circa 1926



The son of a miner, George William Bissill was born at Fairford, Gloucestershire. Later the family moved to 45 Ebenezer Street, Langley Mill, Derbyshire. From the age of thirteen till his enlistment in the army, Bissill worked in the mines. He was to draw upon his experience of

working in the dangerous, cramped conditions through many years of his painting life.

He was badly gassed in France and in 1918 he was invalided out of the army after hospitalisation. On resuming civilian life, his attempt to return to mining failed. Bissill then enrolled on a course at Nottingham



Christ on the Cross. Woodcut by George Bissill



Fixing a Pit Prop by George Bissill

School of Art, which he left in frustration after a few weeks. In 1921, by now a village postman, he began his association with the Arts Club, entering an oils portrait and caricatures in the Annual Exhibition.

Bissill's momentous decision to move to London in 1922 saw him working as a pavement artist outside the BBC and an Evening News journalist asked him to transfer his drawings onto paper for publication. This led to a highly successful one-man exhibition at the Redfern Gallery.

His fame spread and an introduction to ballet writer and art critic Arnold Haskell resulted in a visit to Paris as the writer's guest. There Bissill drew, painted and engraved a variety of subjects, the ballet, circus, rivers and canals. He later illustrated books, posters and produced stage set, costume, furniture and decor designs. In the 1930s he was living near Newbury and still sending work, until the early 1950s, to the Ilkeston Arts Club Exhibitions.

Sketches and Snapshots

In 1939 the Club showed slides produced from a miniature camera which used one quarter inch square film negatives. This format, though becoming very popular, was controversial, with many veteran photographers viewing the camera with scepticism.

The preparations for the 14th Annual Exhibition of the Club in the large room of the Town Hall caused a sitting of the County Court and Petty Sessions in 1922 to be transferred to the Council Chamber.

In 1922 Tom Hammond, the eminent Nottingham Artist, gave a talk to the Arts Club *Nottingham as I Knew it*. He showed eighty lantern slides of his drawings of buildings and places, many of which had become unrecognisable due to developments in Nottingham. Nearly eighty years later Bernard Bielby lectured the Club on *Tom Hammond's Pictures of Nottingham*. Mr Bielby showed about eighty glass slides with the aid of an old projector. For those who missed it first time it was a delight!

In his opening address at the Club's 43rd Annual Exhibition in 1959, the Headmaster of Hallcroft Boys School, Austin D. Nash B.A., paid this effusive tribute to the painters: "You are the people who are the players, you do not walk the touch-line. You are the actors, not the audience. You are among the very best- the roses, not the greenfly and at worst you are the cabbages, rather than the grubs".

An unusual lecture on the Arts Club programme of 1956 was given by Inspector Parkin of Nottingham CID. The talk *Police Photography* was illustrated with film and included some photographs of accidents. The Inspector warned that "Some of the photographs to be shown are not pretty ones".

During a Club outing to Haddon Hall at Whitsun 1905, a quartet of photographers found that they needed to put a fresh stock of photographic plates in position. On enquiring at an hotel in Alport, the proprietors offered their carriage house as a suitably dark place for the operation. A photographer described the scene: "With the help of a changing bag the work was safely and expeditiously accomplished, the incense rising from a mound of equine refuse in the middle of the floor making frantic pulling at the tobacco pipe an urgent necessity to somewhat modify the pungent aroma."

There was an air of quiet contemplation when Vickie Rouse was posing in the nude for the Arts Club in 1981. Suddenly the door opened and heads turned. In the doorway stood a 'bobby' who, with an abashed glance at the model, retreated with the words "Err - I saw the light - thought I'd better check - can't be too careful - sorry to disturb you". A report in the local press described the incident as 'A REAL BOBBY DAZZLER!'

For several seasons the Club ran competitions using the 'Single Use Camera', not a 'throw away' camera for if disposal occurred there would be no pictures! All members started from the same situation with a similar piece of equipment, creating a level playing field. Ideas and technique were the thing. The evenings with the 'judge' always brought hoots of fun, often at the expense of experienced photographers, and even produced several 'small' masterpieces.



Officers of the Club

CHAIRMAN

T.W. Smith	1903 - 1919
T.W. Snow	1919 - 1932
G.A. Seaman	1932 - 1936
T.W. Snow	1936 - 1937
T.S. Wilkinson	1937 - 1938
J.A. MacDonald	1938 - 1946
T.S. Wilkinson	1946 - 1947
J.A. MacDonald	1947 - 1949
T.S. Wilkinson	1949 - 1954
C. Turton	1954 - 1959
R.W. Turner	1959 - 1971
J.A. Fearn	1971 - 1973
C. Sims	1973 - 1975
J. Lally	1975 - 1990
K.O. Samples	1990 - 1997
W. Grayson	1997 - 1998
W.A. Webster	1998 - 2001
G.W. Wells	2001 - Present

GENERAL SECRETARY

J. Tyrrell	1903 - 1912
J.E. Cox	1912 - 1920
A. Smith	1920 - 1969
D. Johnson	1969 - 1996
P. Campbell	1996 - 1999
K.O. Samples	1999 - 2000
P. Campbell	2000 - Present

NEEDLEWORK SECRETARY

M. Evans (Mrs Dobson)	1903 - 1913
G.I. Smith	1913 - 1970

PAINTING SECRETARY

J. Tyrrell	1903 - 1912
S. Wardle	1912 - 1928
F. Shaw	1928 - 1929
S. Wardle	1929 - 1948
J. Lally*	1948 - 1975
J. Cundy	1975 - 1980
D. Mallard	1975 - 1980
D. Mallard	1980 - 1996
M. King	1996 - 1999
P. Saunders	1999 - 2000
M. King	2000 - 2001
J. Pochin	2001 - Present
J. Wallbank	2001 - Present

*J. Lally was assisted by D. Allen	1969 - 1970
M. Justice	1971 - 1973
J. Cundy	1973 - 1975

HON. TREASURER

W. Shakspeare	1903 - 1920
F.C. Harrison	1920 - 1936
J.D. Godber	1936 - 1942
J.D. Thompson	1942 - 1946
J.D. Godber	1946 - 1970
K. Clarke	1970 - 1992
W.K. Johnson	1992 - 1996
P. Saunders	1996 - 1999
C. Carp	1999 - 2000
P. Saunders	2000 - Present

PHOTOGRAPHIC SECRETARY

W. Shakspeare	1903
A. Smith	1903 - 1928
P.E.N. Butt	1928 - 1930
S.E. Briggs	1930 - 1949
D. Johnson	1949 - 1969
K. Clarke	1969 - 1971
J. Shelton	1969 - 1970
K.O. Samples	1971 - 1977

Ilkeston Photographic Club Formed 1976/77

J.G. Raynor	1977 - 1979
W. Arme	1979 - 1981
D. Thacker	1981 - 1983
A. Thornhill	1983 - 1992
D. Moseley	1992 - 1993
D. Doar	1992 - 1993
D. Moseley	1993 - 1994
D. Johnson	1993 - 1994
S. Spence	1994 - 1995
G.W. Wells	1995 - 2000
D. Holman	2000 - 2001
K.O. Samples	2001 - Present

Ilkeston Photographic Club

CHAIRMAN

D. Johnson	1976 - 1985
E.M. Ladbury	1985 - 1987
J. Hutchby	1987 - 1997
J.G. Raynor	1997 - 1998

The Arts Club Today

Here is what some of the current members have to say about their club

As a newcomer it's good to feed off people and get the motivation and inspiration to paint.

Sean Stevenson

I am used to sketching and using oils but having joined the club and seeing demonstrations it gave me confidence to try other mediums.

Liz Sharratt

I can't imagine life without it.

Alan Webster

The exchange of views and opinions along with all the help given by experienced members encourages everyone.

June Wallbank, Painting Secretary.

I enjoy the companionship of the people at the club and the exchange of ideas.

Hazel Bratt.

It is inspiring to be in the club with much better painters who help me with my own work.

Jean Parsons.

I love to see a local arts club get together with local people and discuss art.

Marion Axford

To put it in a nutshell - it's a good night out and I enjoy the whole bag o' mashin.

Colin Stevenson.

I get a lot of pleasure from meeting people with the same interests, seeing their work - and I appreciate the help of the more experienced artists.

Veronica Schofield.

The challenge of the club and meeting with the other members is enjoyable.

Brian Ottewell.

The club means to me . . . enjoying stimulating company, making friends, sharing interests, developing skills and learning something new.

Pat Campbell, Gen. Secretary.

I only joined to make up the numbers . . . and look where it got me.

George W. Wells, Chairman.

Fo' thotty-fyv yoz, ah've thowt club naight a raight gud naight!

Danny Corns.



CURRENT CLUB COMMITTEE

George W. Wells	Chairman
Danny Corns	Vice-Chairman
David Mallard	Vice-Chairman
Pat Campbell	General Secretary
Joan Pochin	Painting Secretary
June Wallbank	Painting Secretary
Ken Samples	Photographic Secretary
Pam Saunders	Treasurer
Shelagh Cooper	Publicity Officer
Hazel Bratt	Ordinary member
John Cundy	Ordinary member
Barbara Mallard	Ordinary member
Jennie Rigby	Ordinary member
Liz Sharratt	Ordinary member



ILKESTON ARTS CLUB